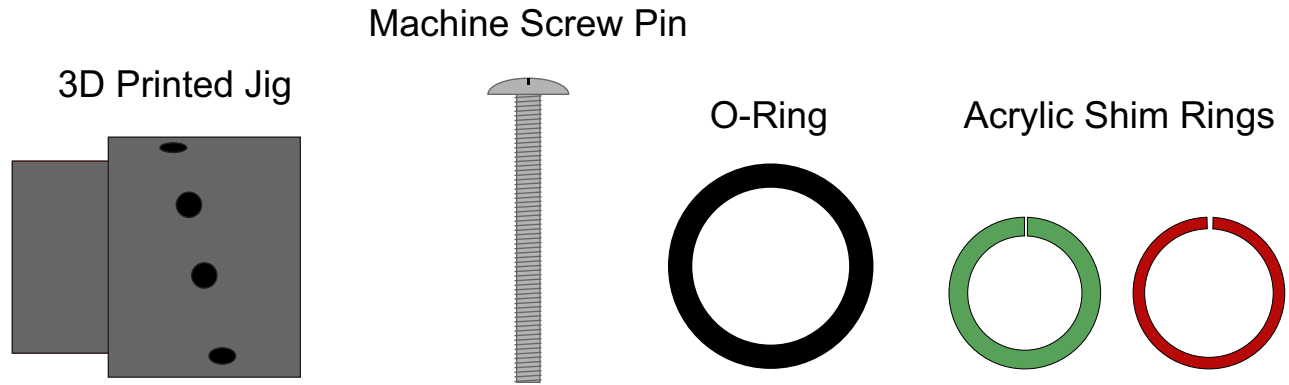


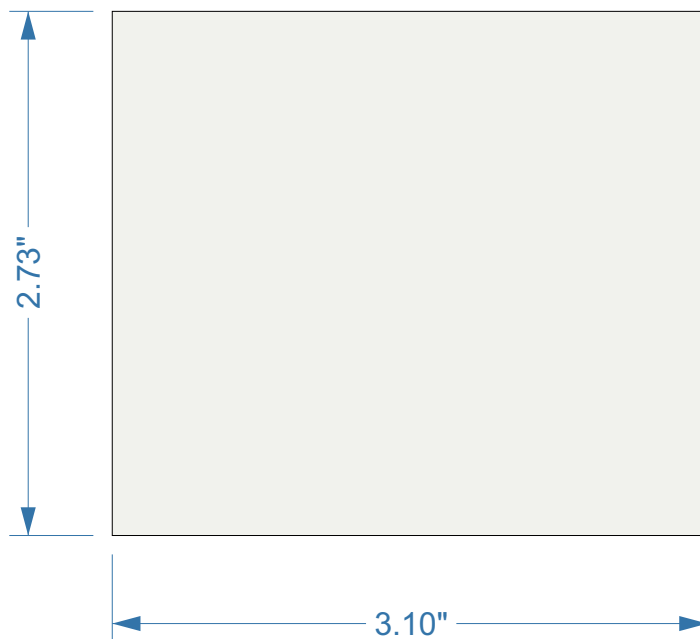
# LightShine3D Ornament Jig

## Parts Supplied in Ornament Jig Kit

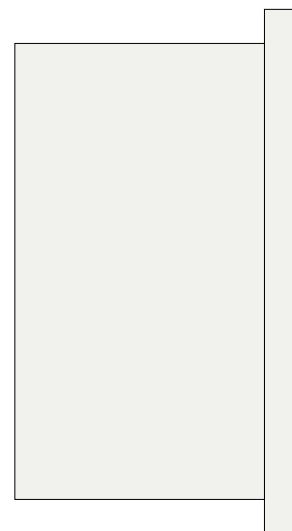


NOTE: It is possible to substitute the 2" pipe fittings for the exact same part in 1-1/2". Doing this will give you a closer jig diameter and circumference to that of the smaller ornaments. My artwork compensation spreadsheet has tested formulas for 2" and 1-1/2" PVC.

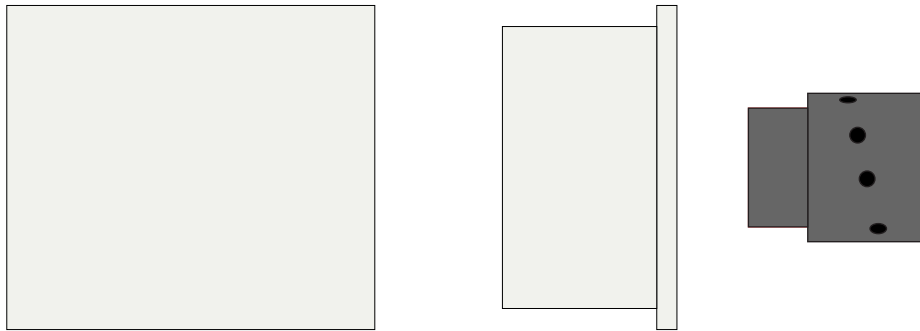
2" PVC Coupler  
HomeDepot #203811391



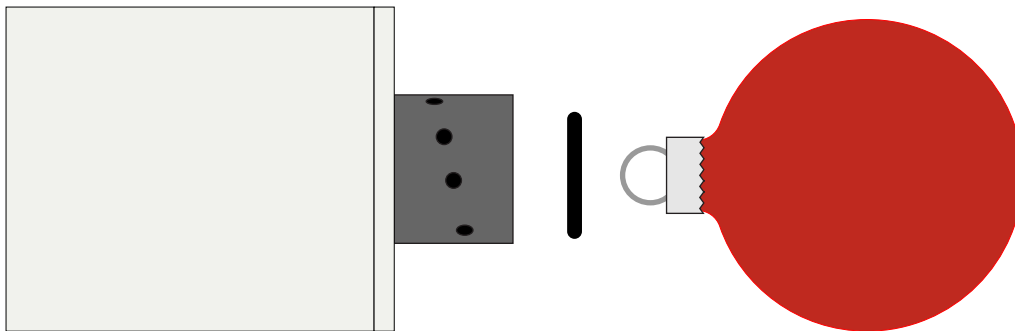
2" x 3/4" Reducer Bushing  
HomeDepot #203825963



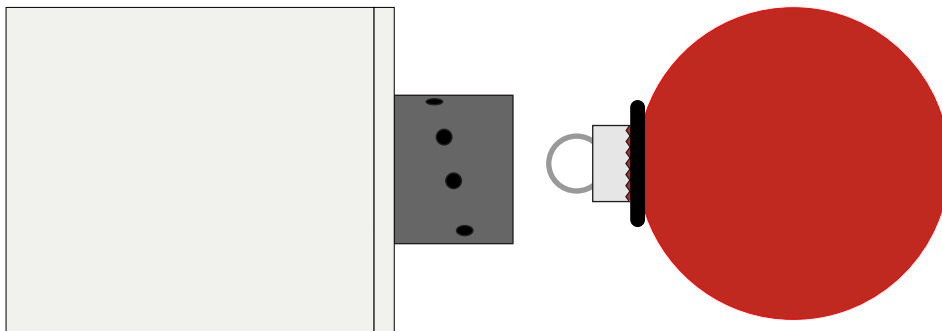
# LightShine3D Ornament Jig



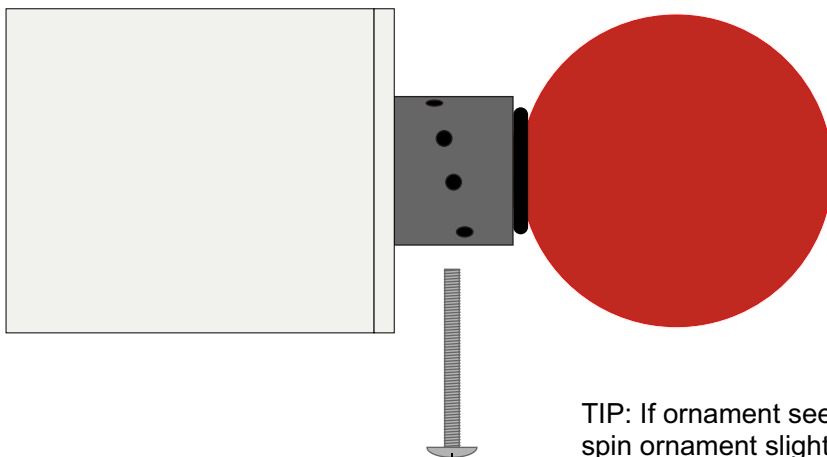
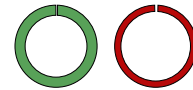
These 3 parts should be pressed together to have a snug fit. 3D printed part should be easily removable by hand, but not loose.



Slip O-Ring onto ornament top. Align spring hole with best fitting hole in printed part.



For smaller ornaments you will slip acrylic ring onto top at this step.



Place pin through hole that has best fit for the ring. Ornament should not wobble.

TIP: If ornament seems loose spin ornament slightly to get a better fit by causing the spring loop to grab the screw.